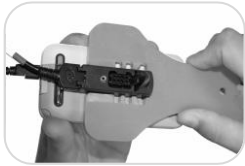
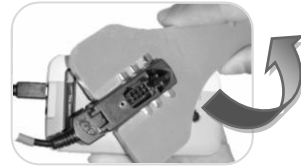


## Removing a Sensor

Step 1



Step 2



### Tips

- Always use VPG Sensor Removal Tool ( V-T40)
- Keep tool flush against product
- Tightly grasp product and rotate tool

## Using Correct Adhesive

Yes



No



### Tips

- Always use proper VPG adhesive on sensors
- **Do not** tape, velcro, double-sided tape, etc.
- Proper adhesives can be purchased from VPG

## Using Tie Strap Gun

Step 1



Step 2



Step 3



Step 4



### Tips

- When attaching a new sensor at night, use a tie strap to hold sensor on as adhesive cures
- Loop tie strap through hole in sensor
- Slide tie strap tip through hole in tie strap
- Use gun (V-T53G) to tighten tie strap and cut excess

## Flex Sensor (V-7056D) Usage

Step 1



Step 2



Step 3



Step 4



### Tips

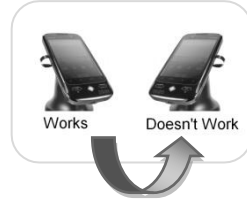
- Always place sensor tip underneath battery
- Reinstall battery and run ribbon back across the top of it
- Replace battery door and attach sensor using proper adhesive (as shown above right)

## Troubleshooting Cord Reels

Step 1



Step 2



### Tips

- If the Sensor LED is not lit, remove unit (handset, sensor and coupler) at the disconnect
- Replace product with known working unit
- If new unit LED doesn't light up, replace cord reel

## Boot Tightening

Step 1



Step 2

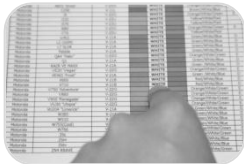


### Tips

- Always use VPG white-handle screw driver (V-T99)
- Using only two-fingers, as to not overtighten, turn screw driver in clockwise motion until screw is firmly tightened

## Using Proper Power Coupler

Step 1



Step 2



### Tips

- Find your product model on color chart
- Identify corresponding color sequence used on coupler for that product, i.e. green - white - blue
- Use power coupler w/ the same color sequence

## Cord Reel Untangling

Step 1



Step 2



### Tips

- Power cords should be untangled **once a week**
- Pull product all the way out until cord stops
- Hold cord close to the base and let remaining slack and product dangle until cord unwinds

## Alarm Beeping:



1 beep every 30 seconds = replace batteries in alarm module

2 beeps every 30 seconds = key/alarm is turned off

Constant beeping = ALERT! Possible theft, investigate the situation